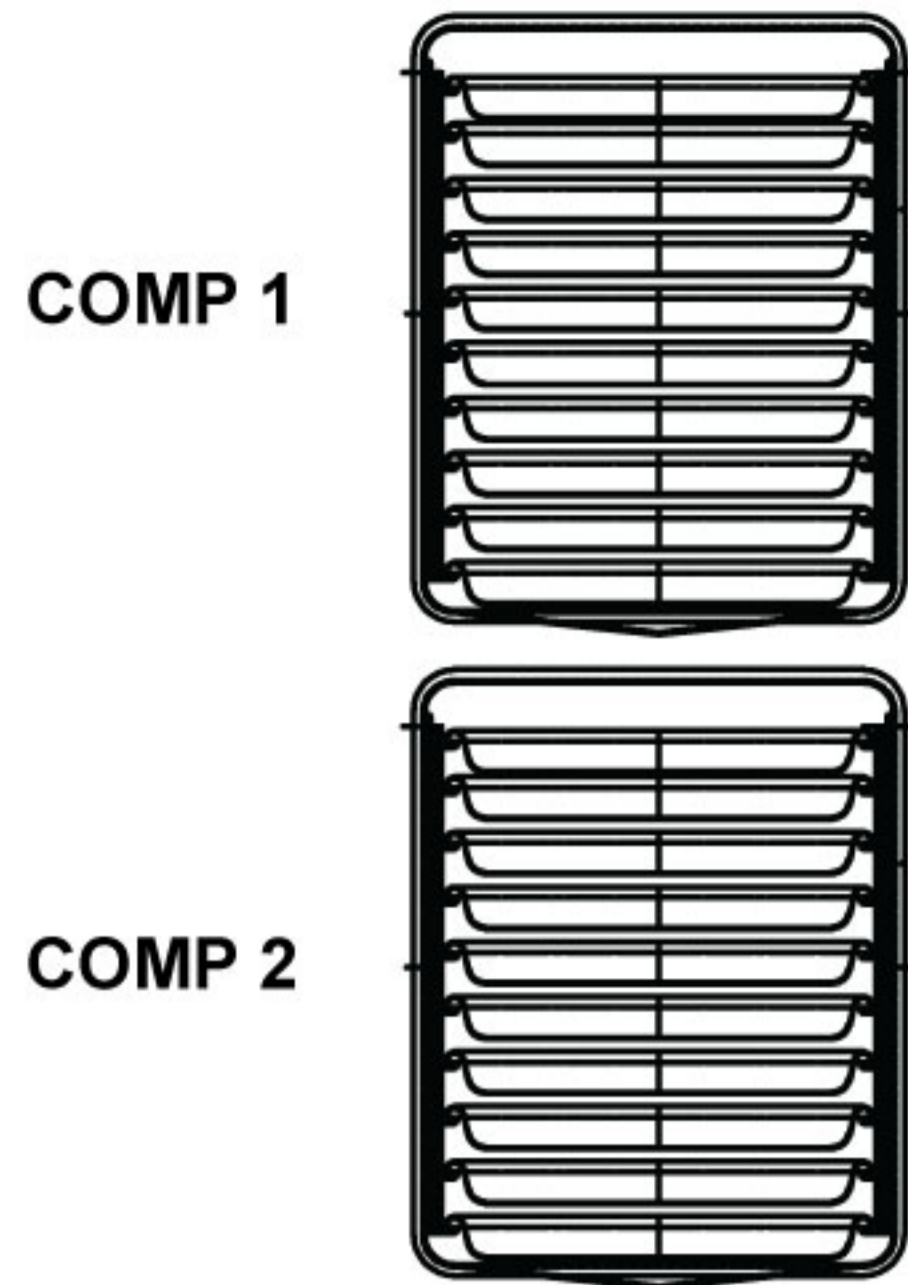
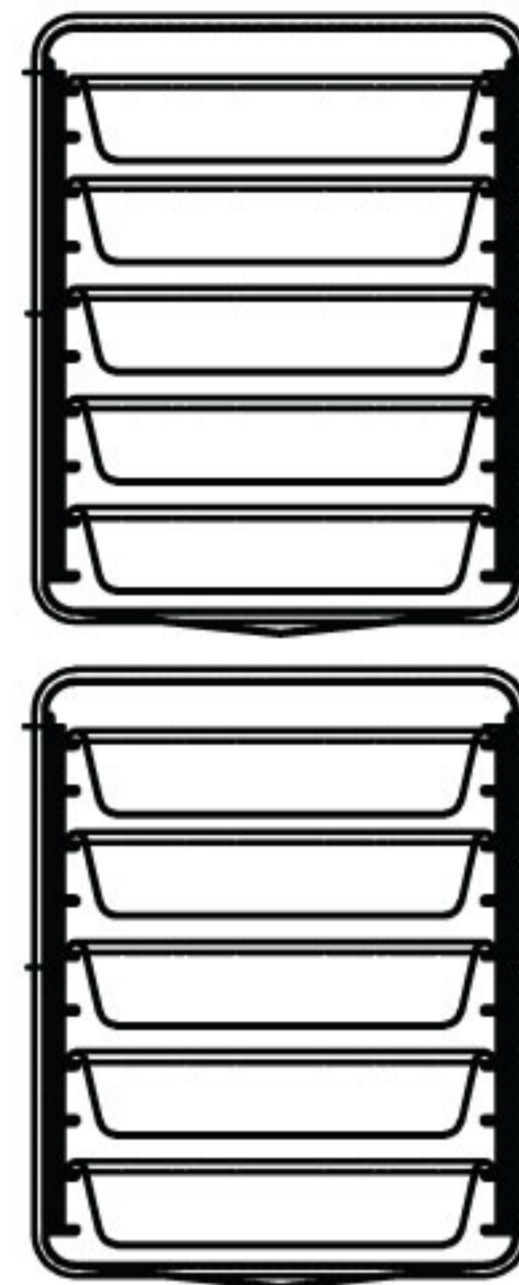




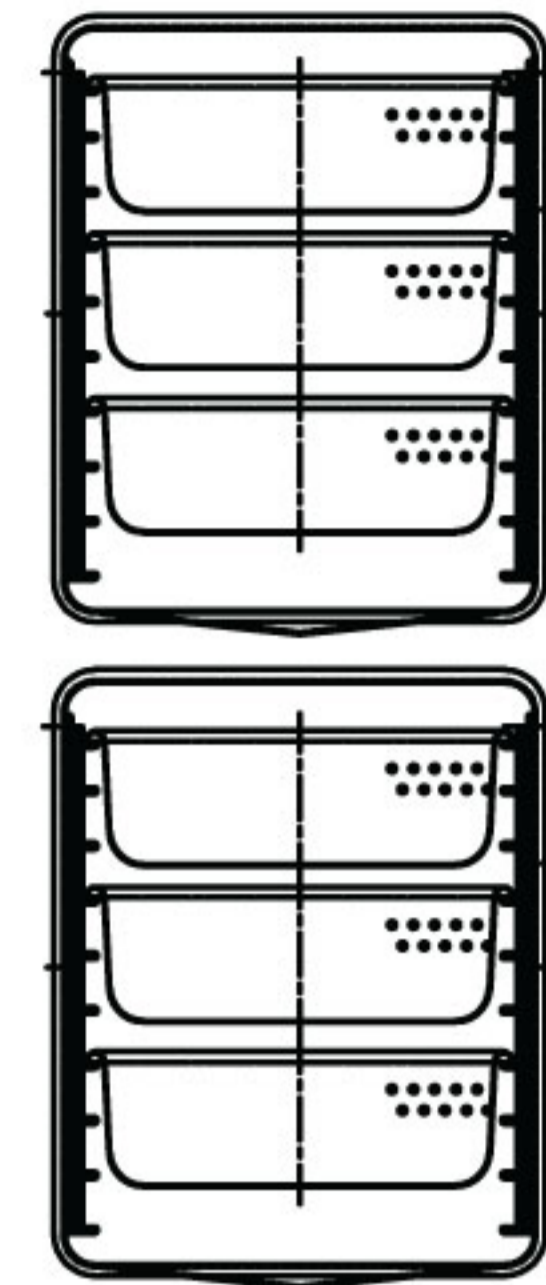
PAN CAPACITY GUIDE



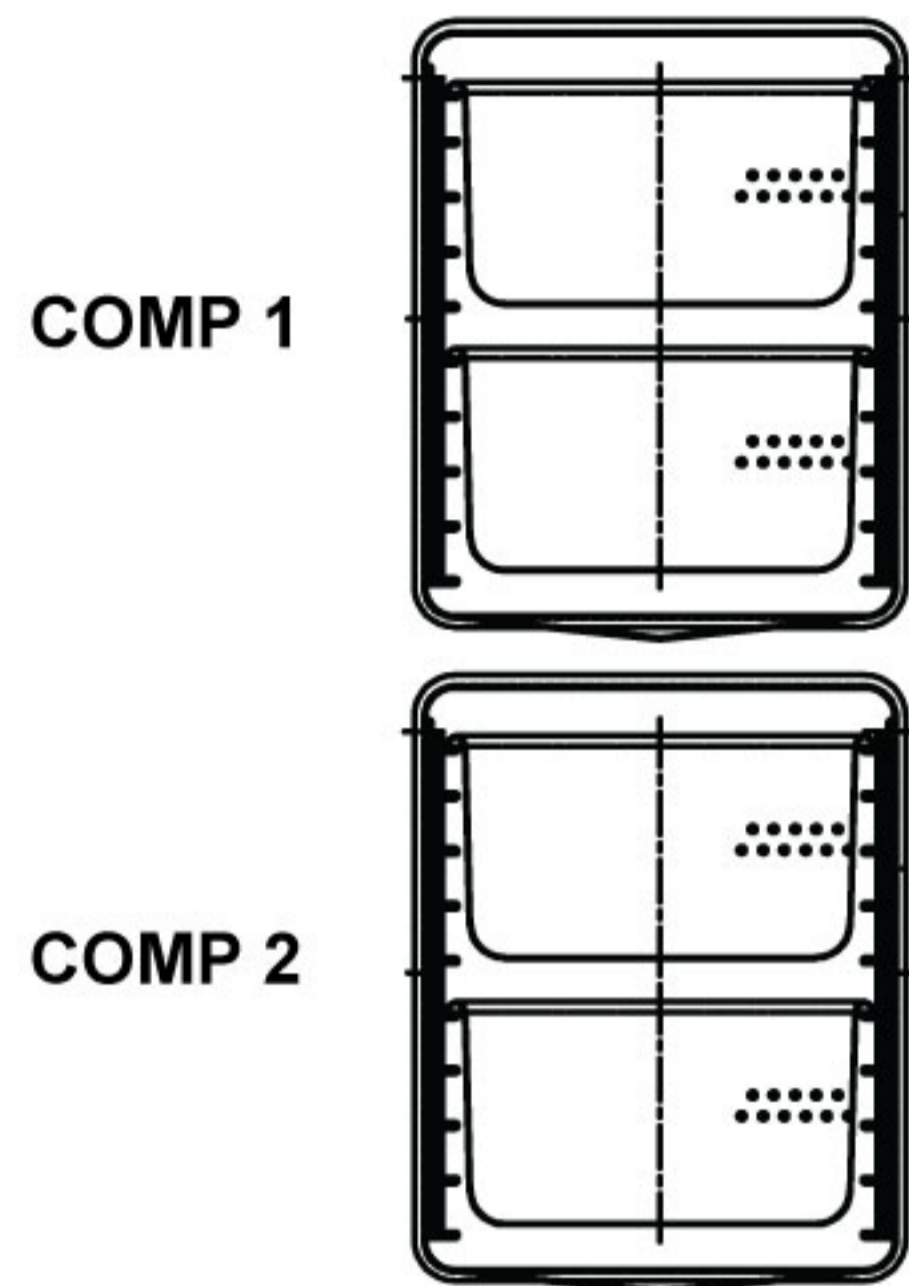
SX-10G3, SX-55EC & GSX-10HE
10 pans 1.25 inch per compartment
20 pans/ steamer



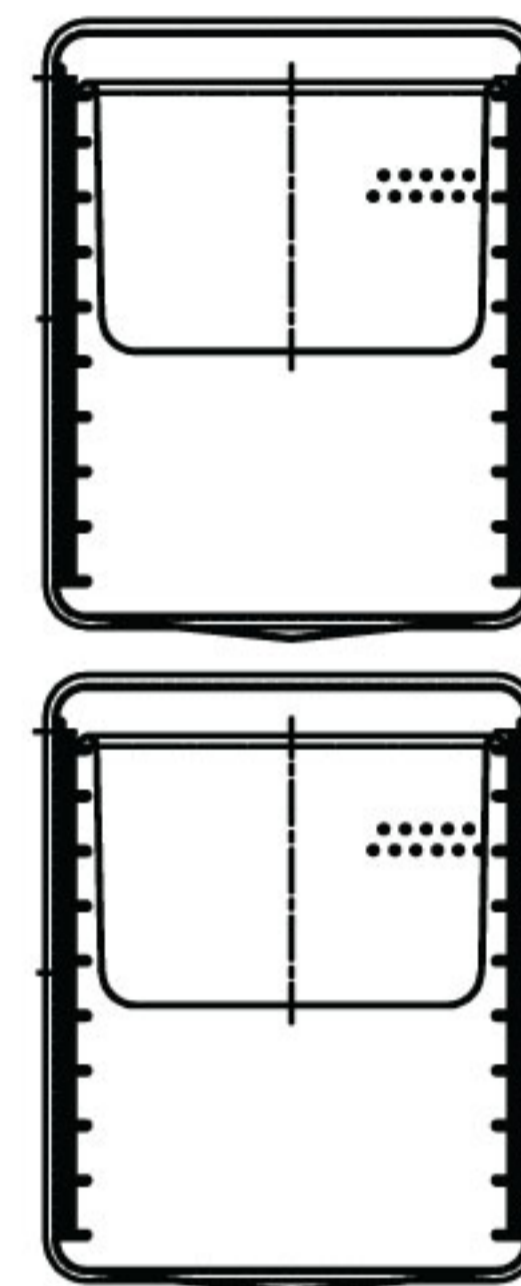
SX-10G3, SX-55EC & GSX-10HE
5 pans 2.5 inch per compartment
10 pans/ steamer



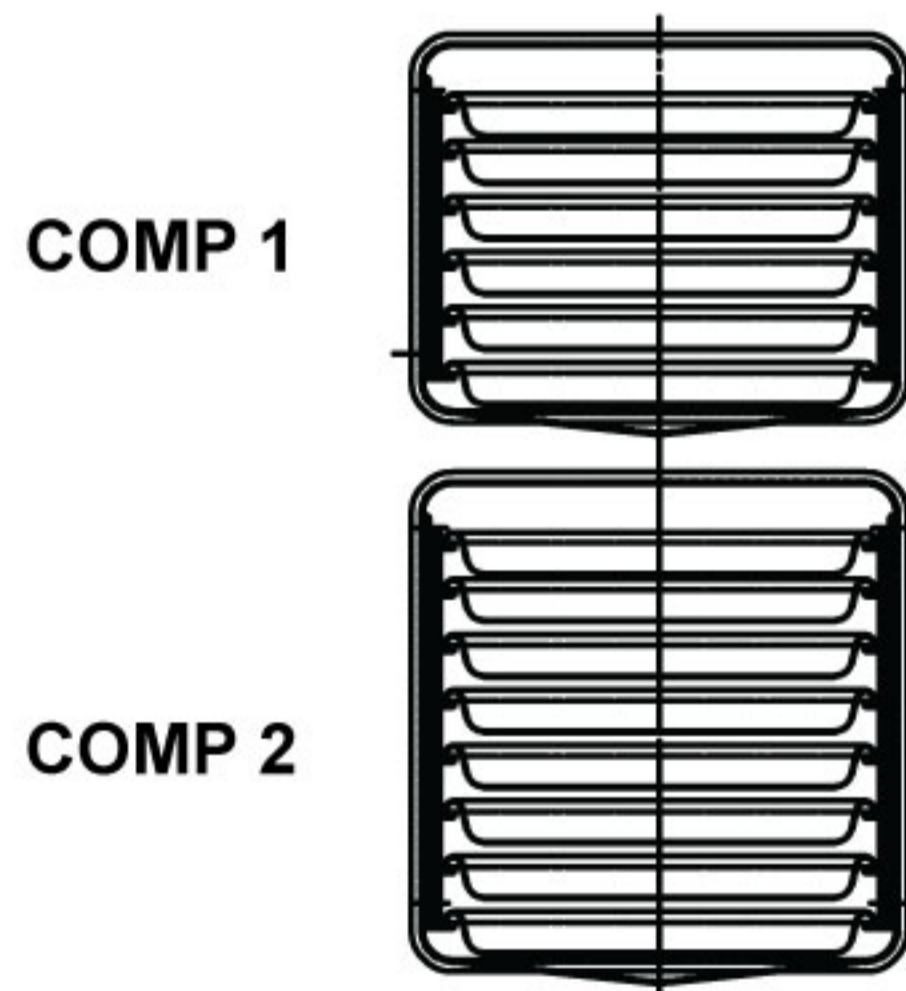
SX-10G3, SX-55EC & GSX-10HE
3 pans 4 inch per compartment
6 pans/ steamer



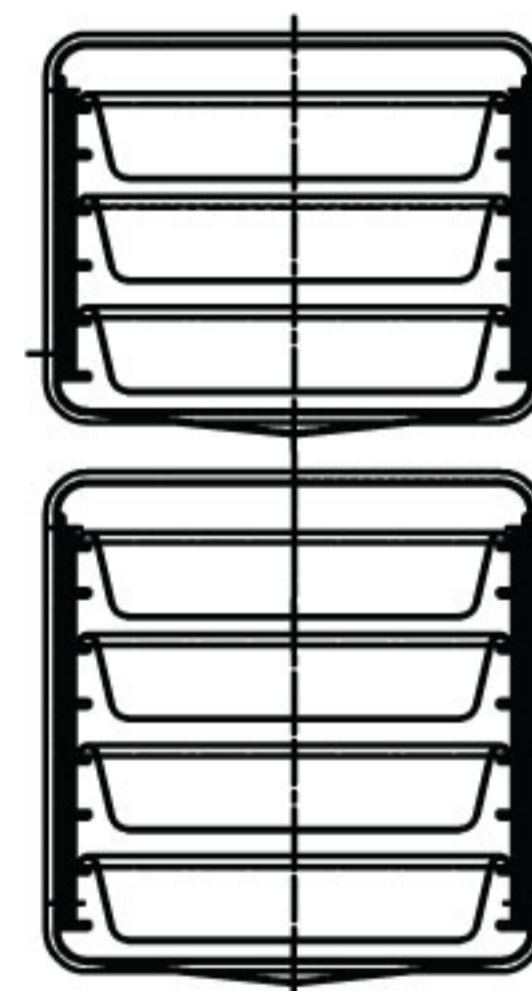
SX-10G3, SX-55EC & GSX-10HE
2 pans 6 inch per compartment
4 pans/ steamer



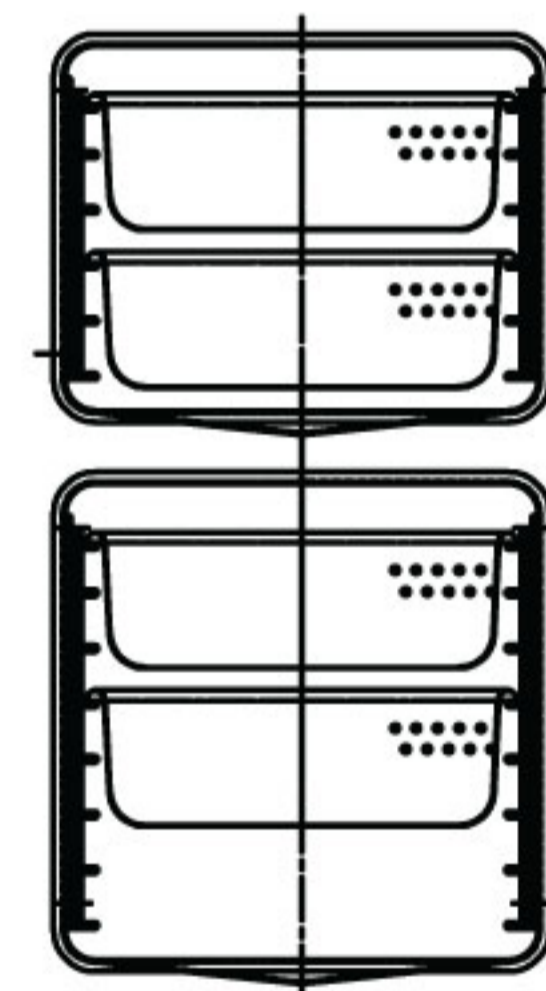
SX-10G3, SX-55EC & GSX-10HE
1 pans 8 inch per compartment
2 pans/ steamer



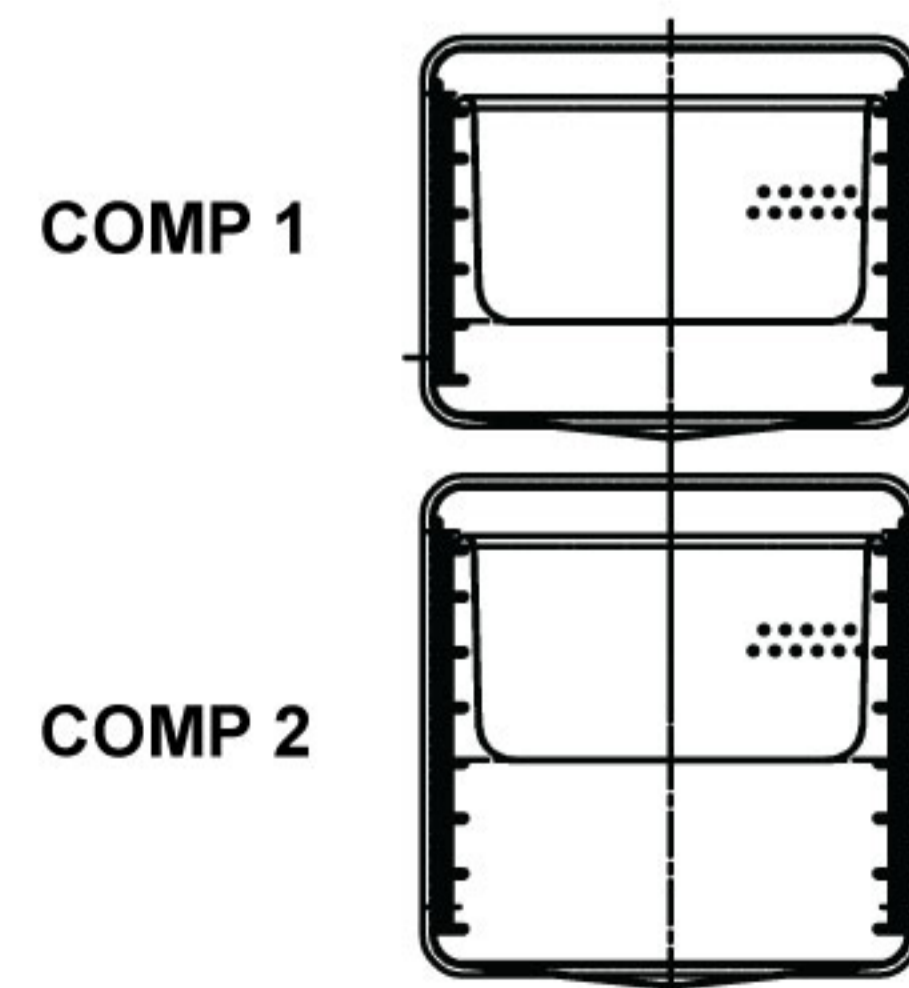
SX-7G3 & SX-34EC
6 pans 1.25 inch per compartment 1
8 pans 1.25 inch per compartment 2
14 pans/ steamer



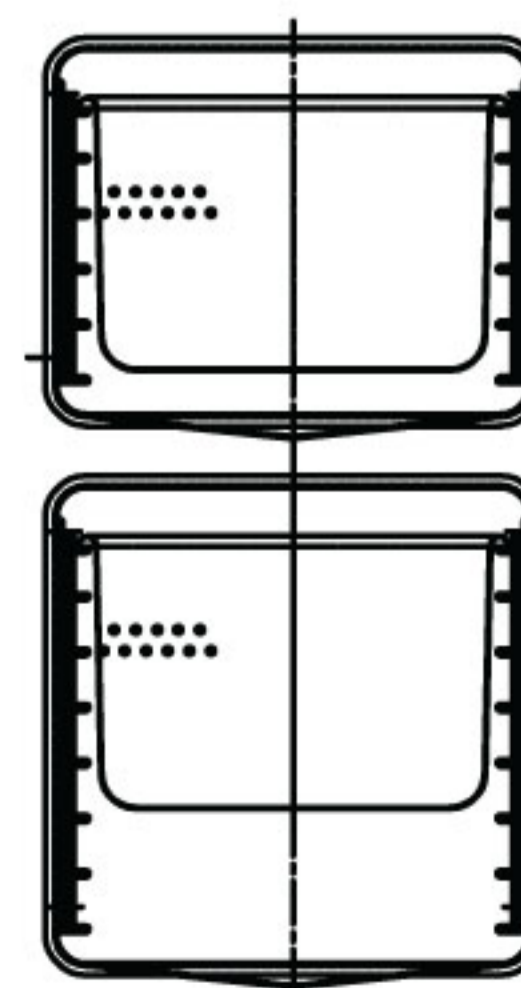
SX-7G3 & SX-34EC
3 pans 2.5 inch per compartment 1
4 pans 2.5 inch per compartment 2
7 pans/ steamer



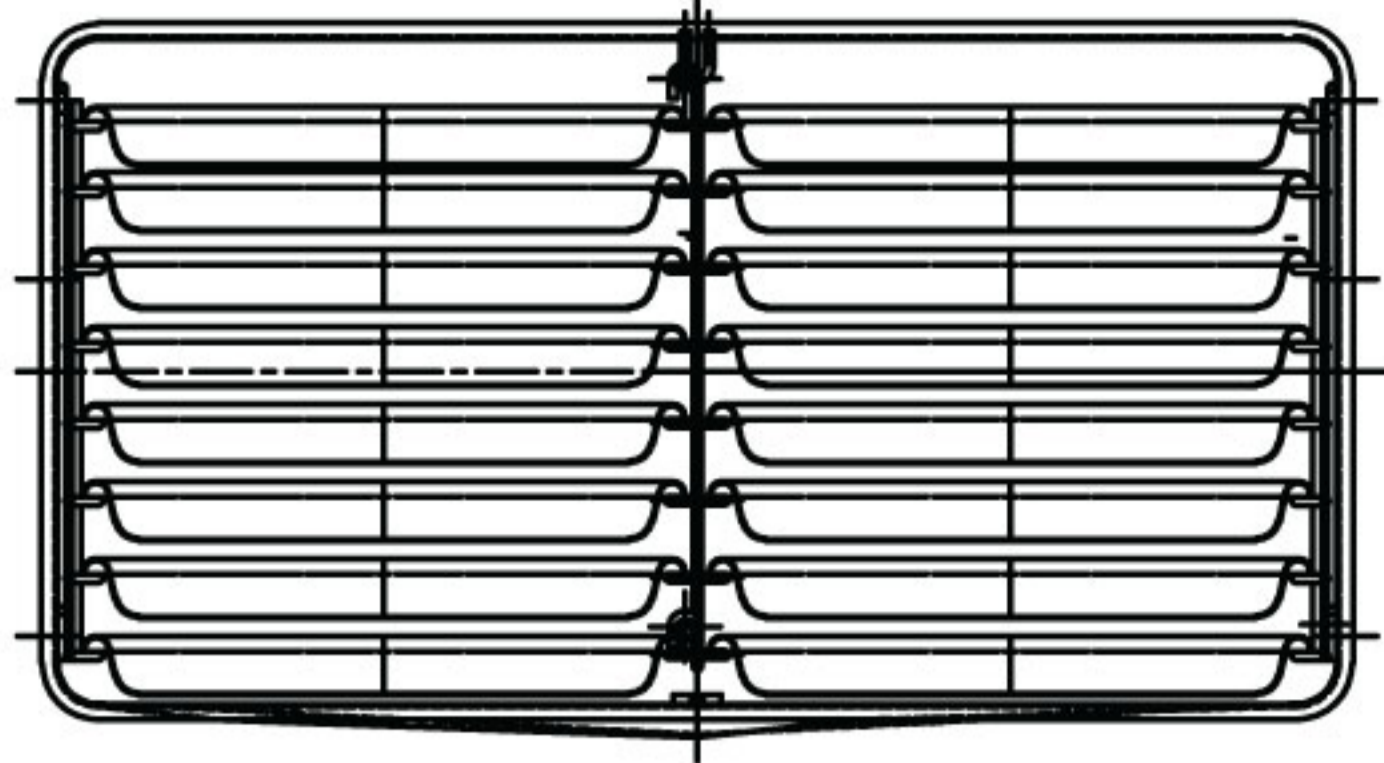
SX-7G3 & SX-34EC
2 pan 4 inch per compartment 1
2 pan 4 inch per compartment 2
4 pans/ steamer



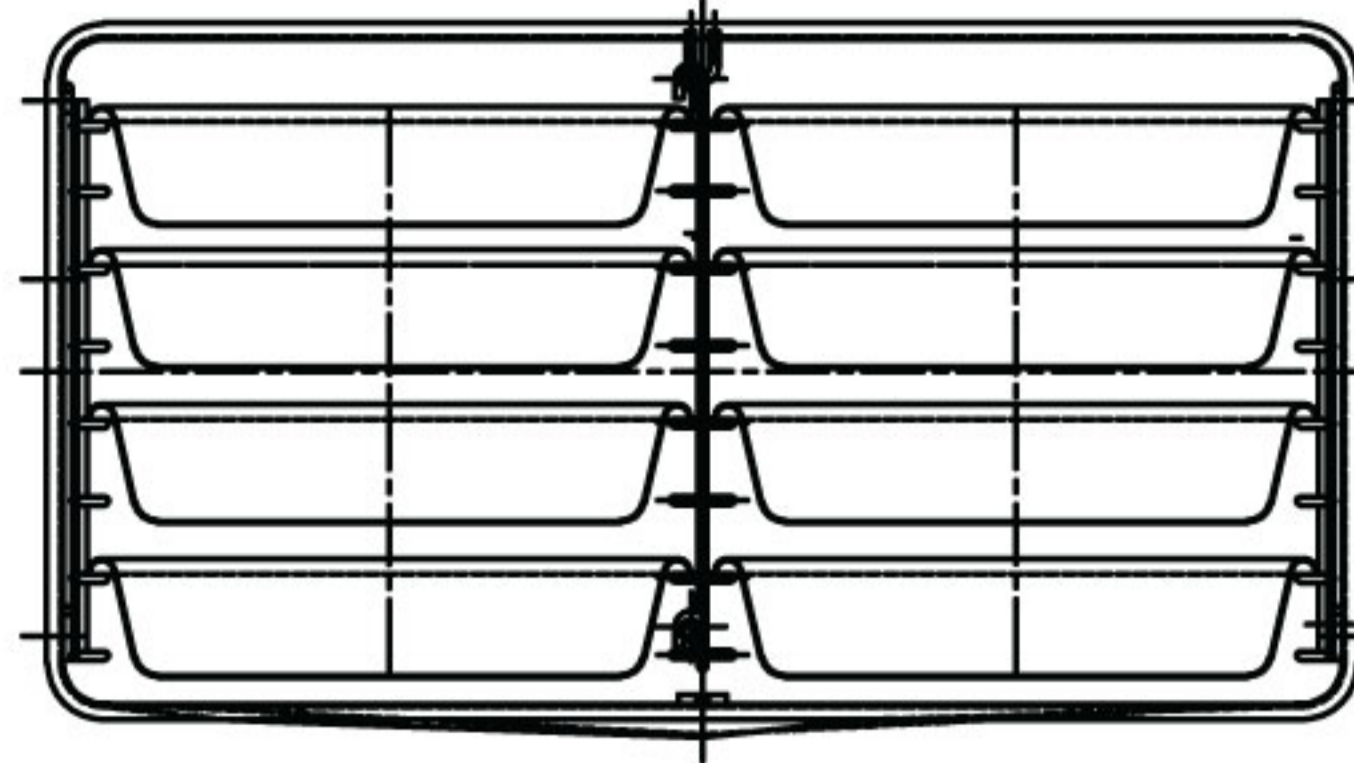
SX-7G3 & SX-34EC
1 pan 6 inch per compartment 1
1 pan 6 inch per compartment 2
2 pans/ steamer



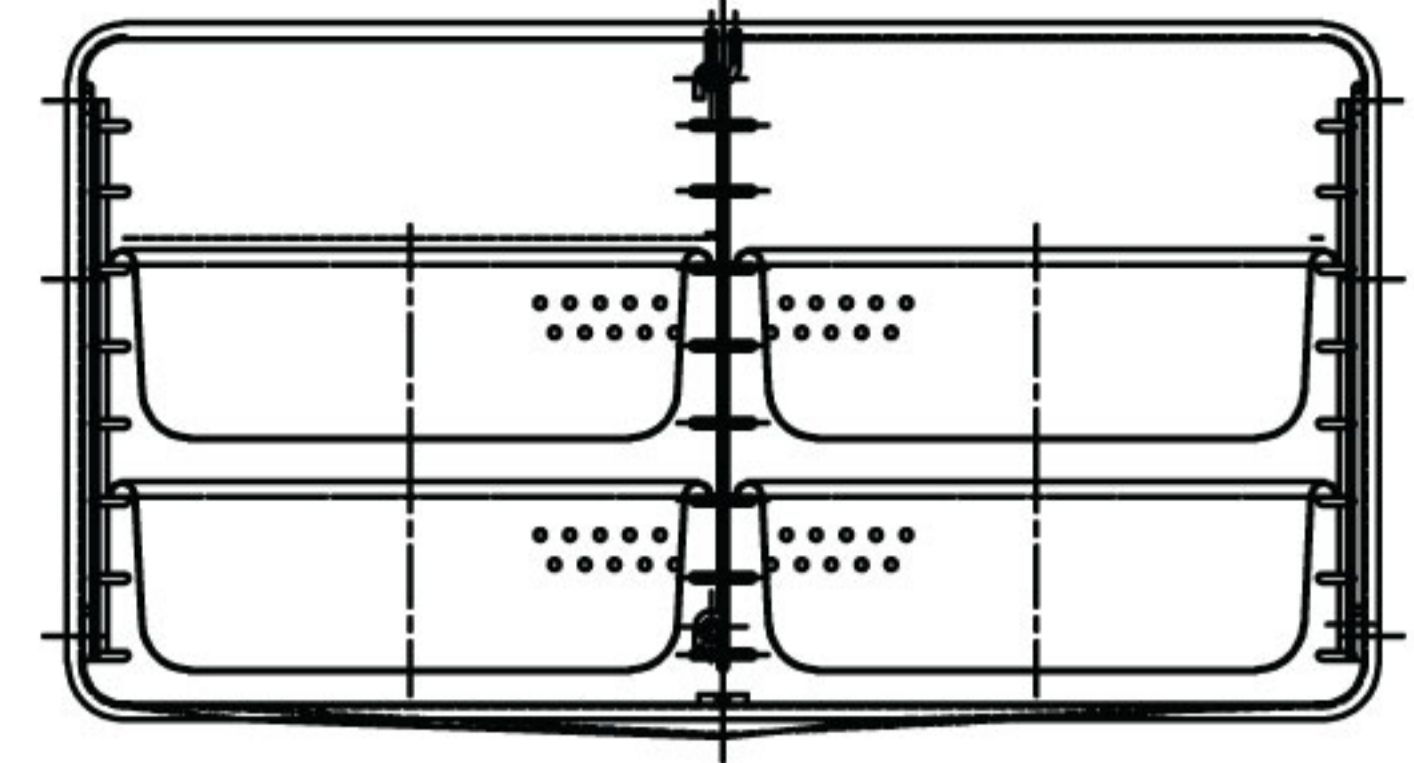
SX-7G3 & SX-34EC
1 pan 8 inch per compartment 1
1 pan 8 inch per compartment 2
2 pans/ steamer



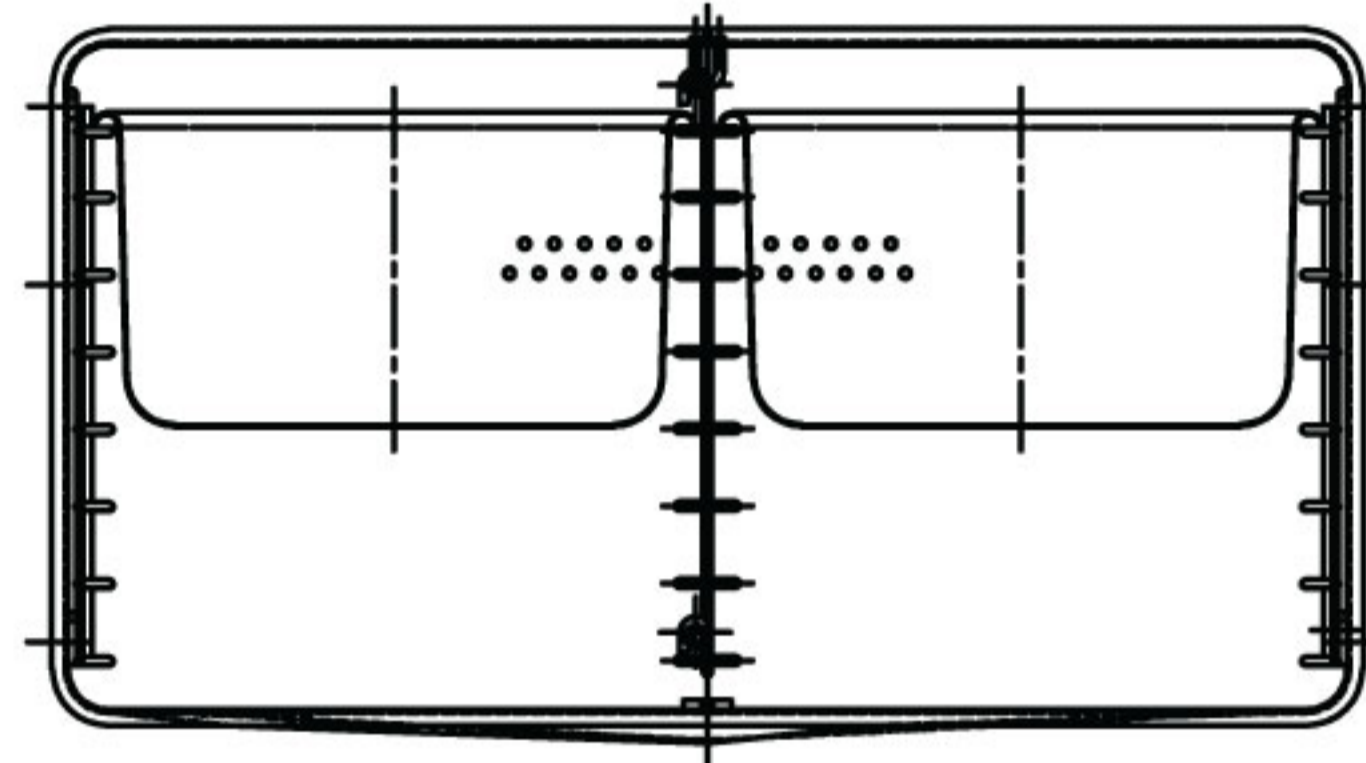
CX-16 & GSX-16HE
 16 pans 1.25 inch per compartment
 32 pans/ steamer



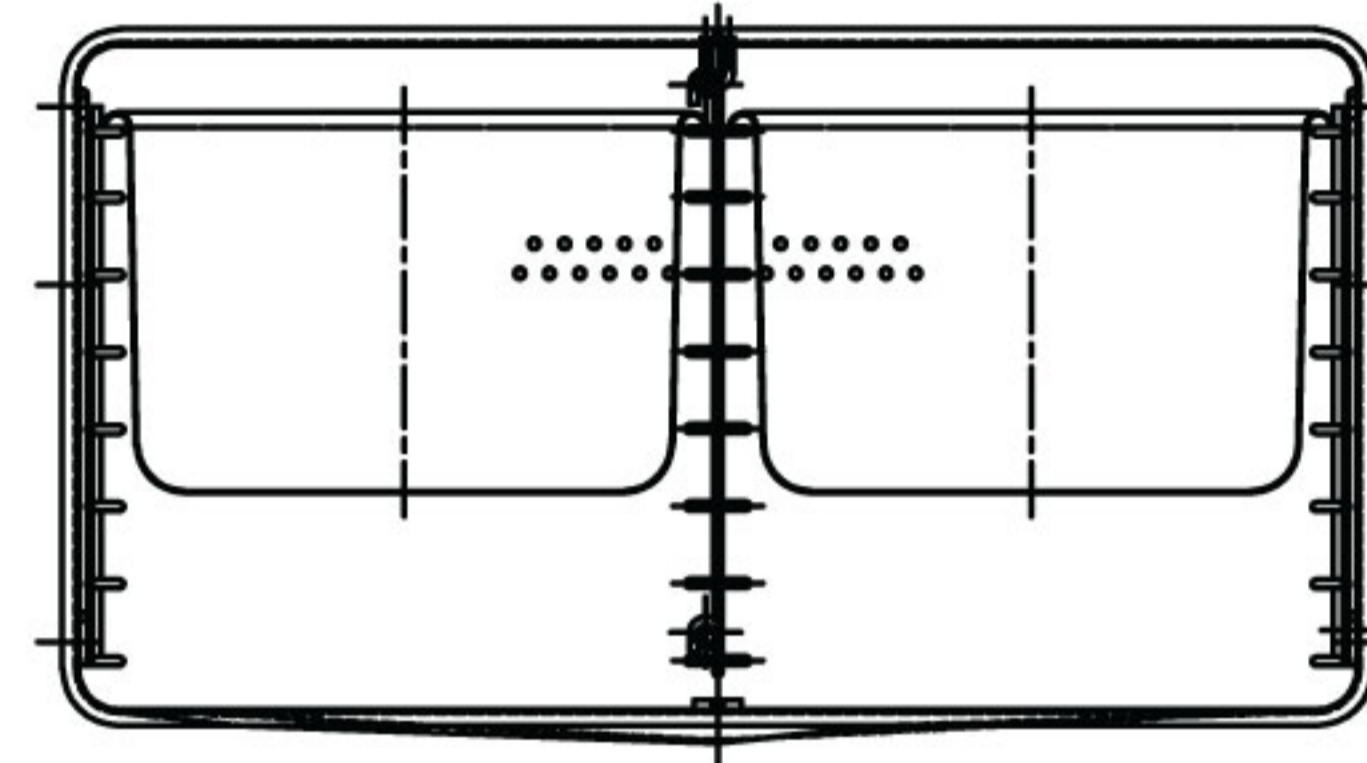
CX-16 & GSX-16HE
 8 pans 2.5 inch per compartment
 16 pans/ steamer



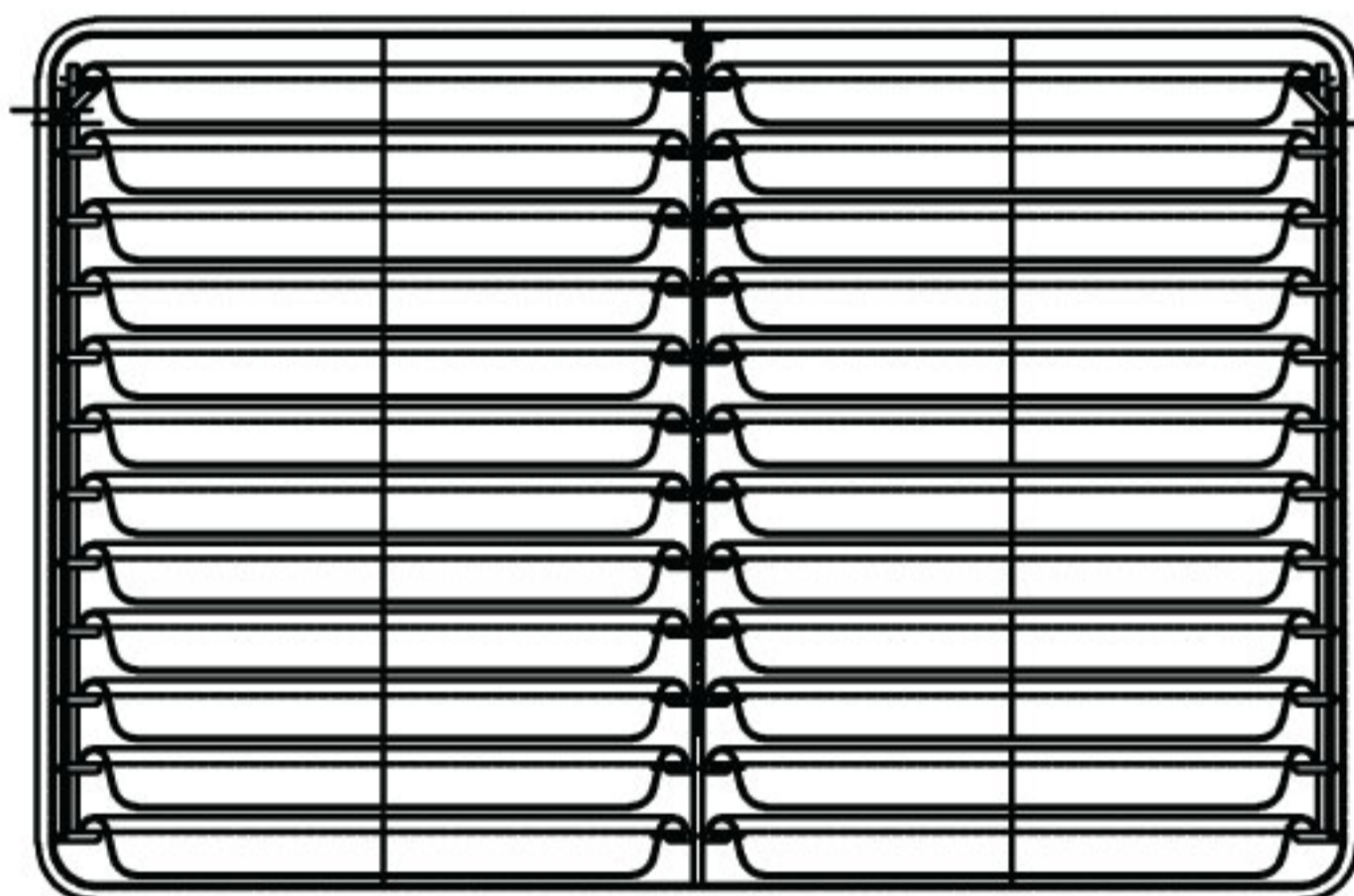
CX-16 & GSX-16HE
 4 pans 4 inch per compartment
 8 pans/ steamer



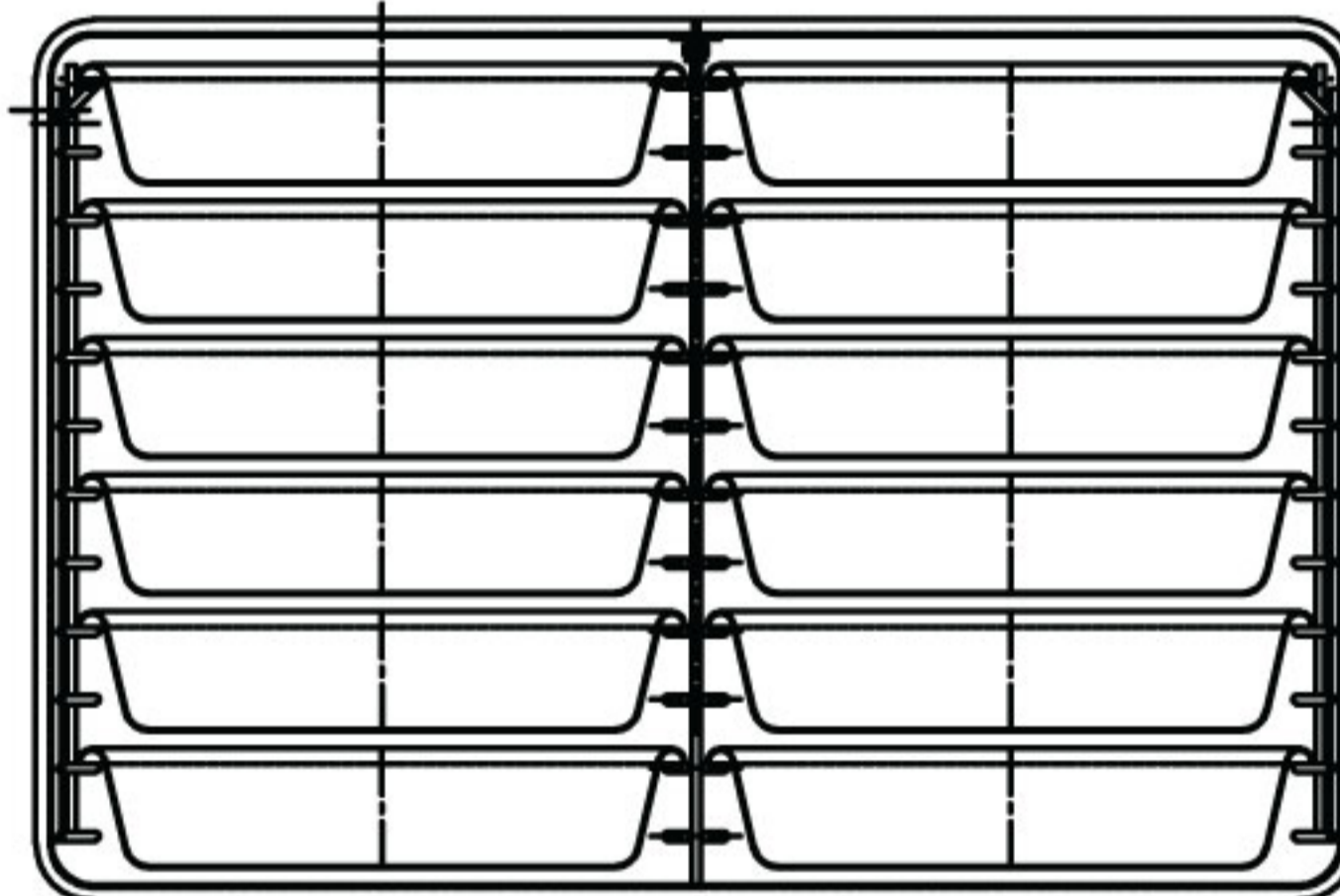
CX-16 & GSX-16HE
 2 pans 6 inch per compartment
 4 pans/ steamer



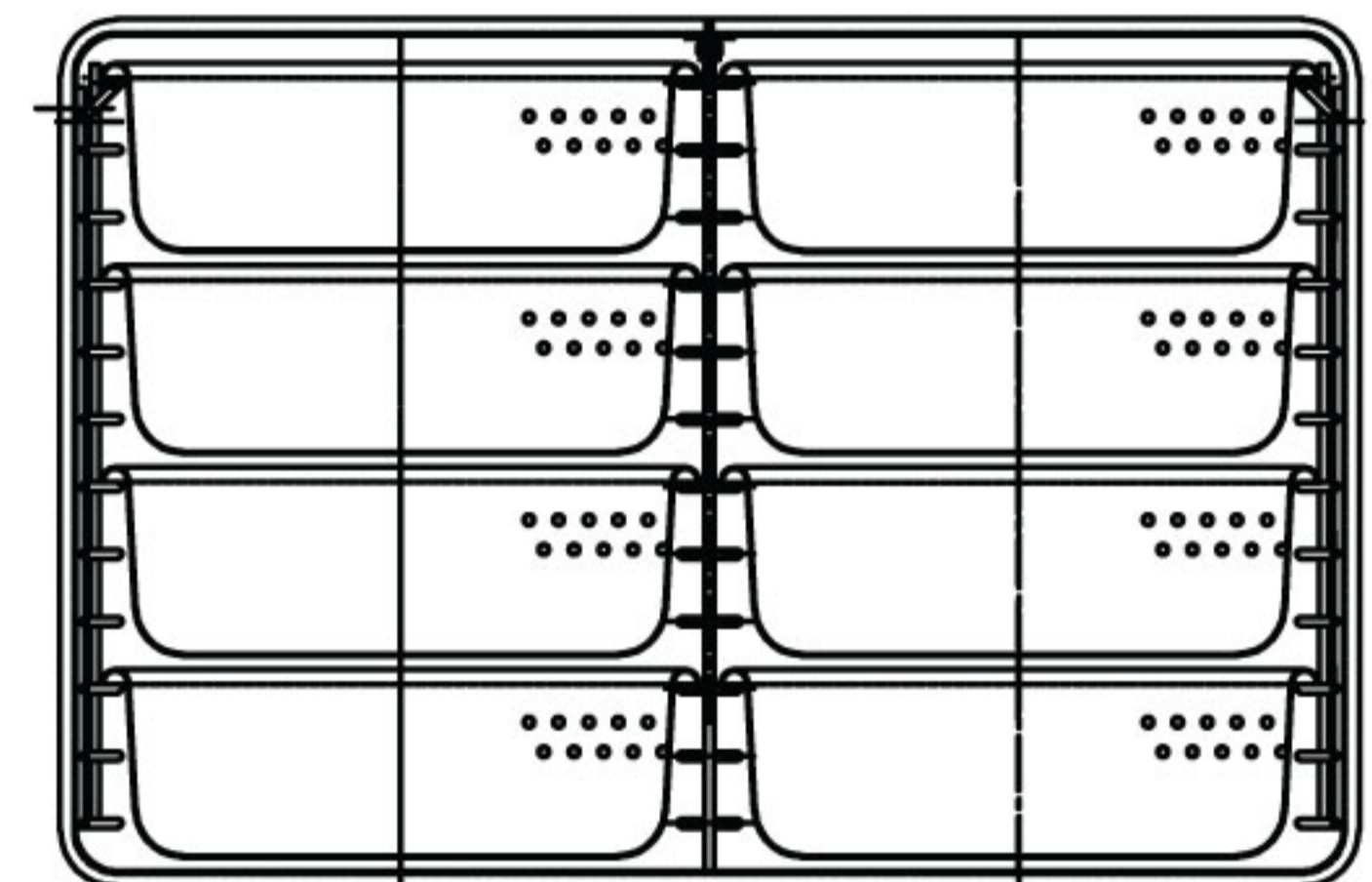
CX-16 & GSX-16HE
 2 pans 8 inch per compartment
 4 pans/ steamer



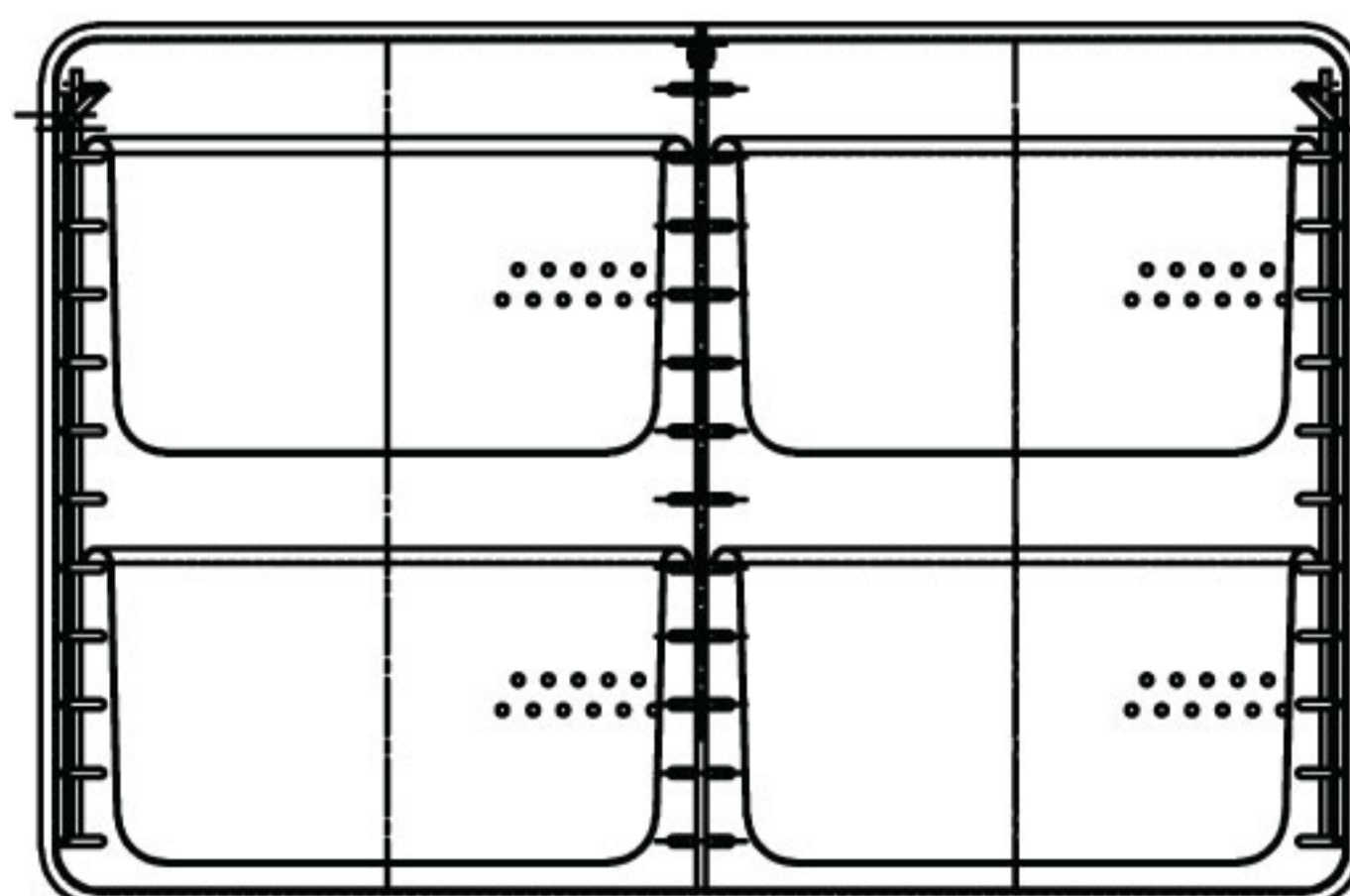
CX-24
 24 pans 1.25 inch per compartment
 48 pans/ steamer



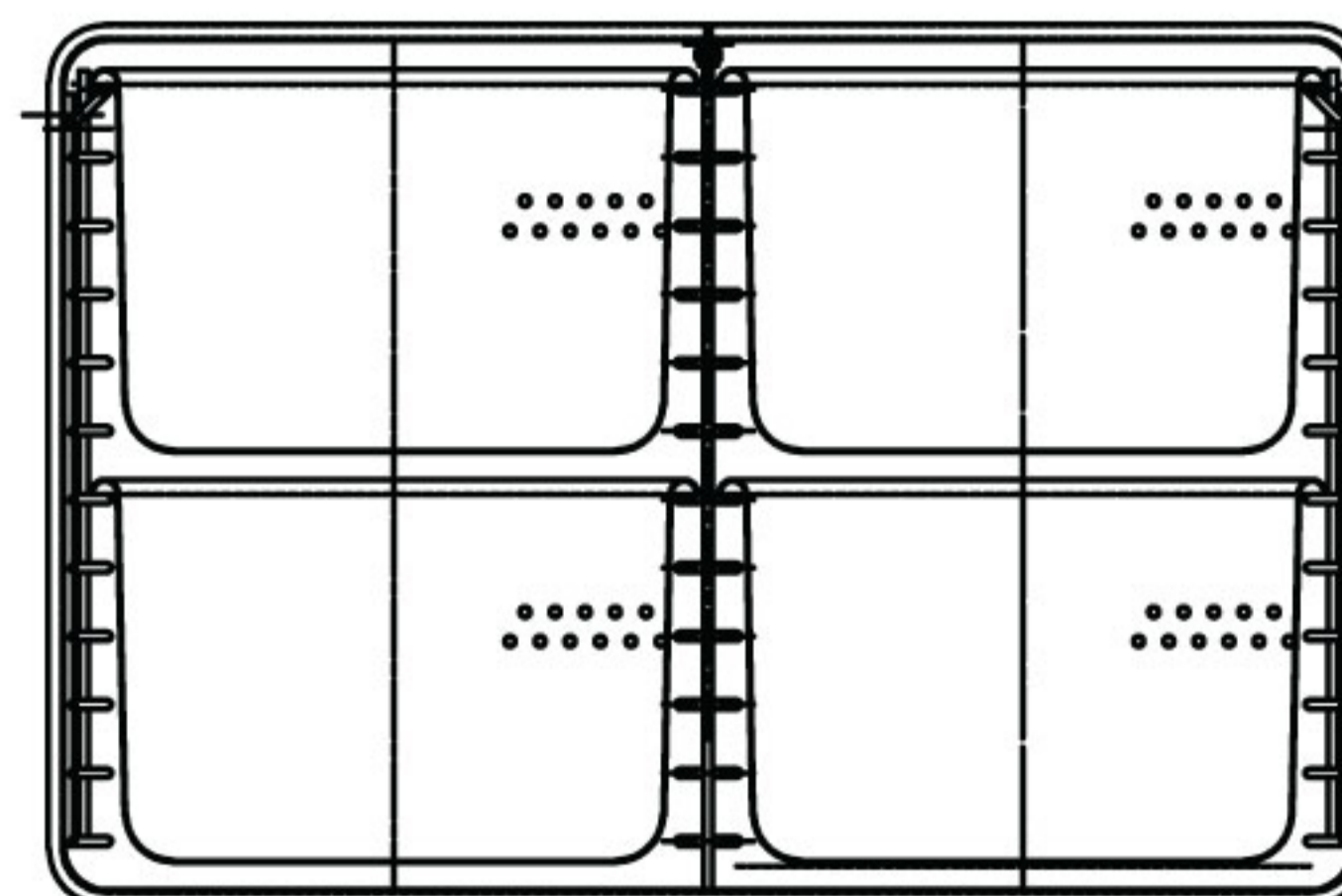
CX-24
 12 pans 2.5 inch per compartment
 24 pans/ steamer



CX-24
 8 pans 4 inch per compartment
 16 pans/ steamer



CX-24
 4 pans 6 inch per compartment
 8 pans/ steamer



CX-24
 4 pans 8 inch per compartment
 8 pans/ steamer